



## **Short Description**

### **Configuration software MA208i Config**

## **Content**

Installation	2
Executing the Software	2
Parameter setting TCP / IP	2
Parameter setting RS232	3
Transfer changes to MA	4
Checking the connection	4
Further information and contact	5



## Installation

After the download of the packed files from the Leuze electronic web page the installation should be proceed with an Administrator account.

The installation is finished with the message and sets an icon on the windows desktop.

The MA 208iConfig software is supported and tested with MS Windows NT,2000 and XP.

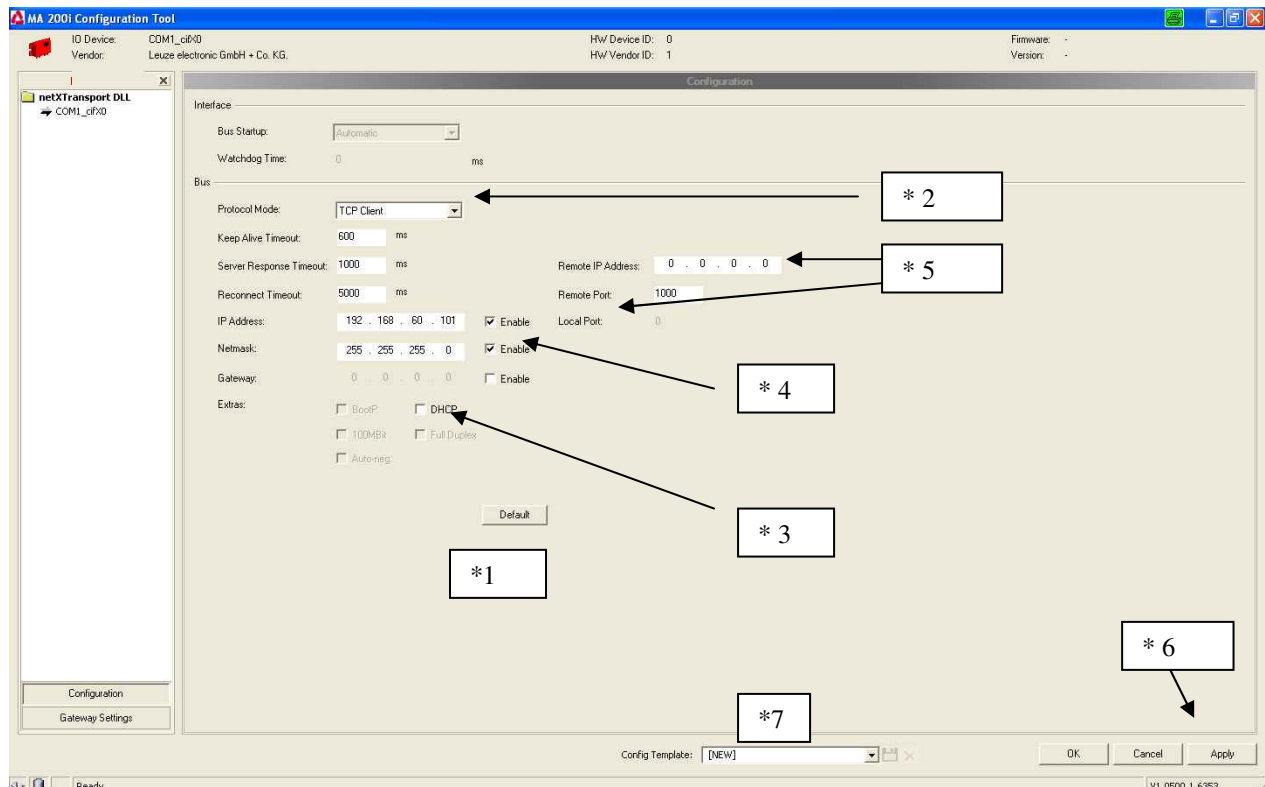
## Executing the Software

Before the Start please set the **Service Switch of the MA** to the Position MA. Now connect the MA208 to the 24VDC power supply. The data connection from the service interface of the MA (9-pin Sub-D) to the PC is done via RX/TX crossed RS232 cable). This cable is not content of the delivery.

With double click onto the Icon the software launches. First the integrated interface manager checks the valid RS232-interfaces (directly and via adapter) und try to set up transmission to the MA208i.

The launch page opens after a short time – with the actual values and parameters of the MA.

## Parameter setting TCP / IP





If you are not sure in which state the parameters of the MA are, click on the Button „Default“ (\*1) for setting the factory defaults.

In default setting the MA208i expects the address via DHCP (\*3) from any server and works as a TCP Client (\*2). To change any setting either click into the type in field or selector and choose the function.[you can select between TCP Server, TCP Client and UDP]

For the selection UDP and TCP Client in the Remote IP field the HOST IP is to type in for creating a connection, and the communication port. For TCP Server no address in Remote IP is needed but the local port.

For changing or setting the IP-address of the device (MA208i), please first deactivate the check box for DHCP (\*3), enable the IP address field (\*4) to type in the new address(\*5). Depending on the selection please don't forget the HOST (Remote)IP address. Please note for proper function the MA(s) and the PC or the SPS has to be in the same address area.

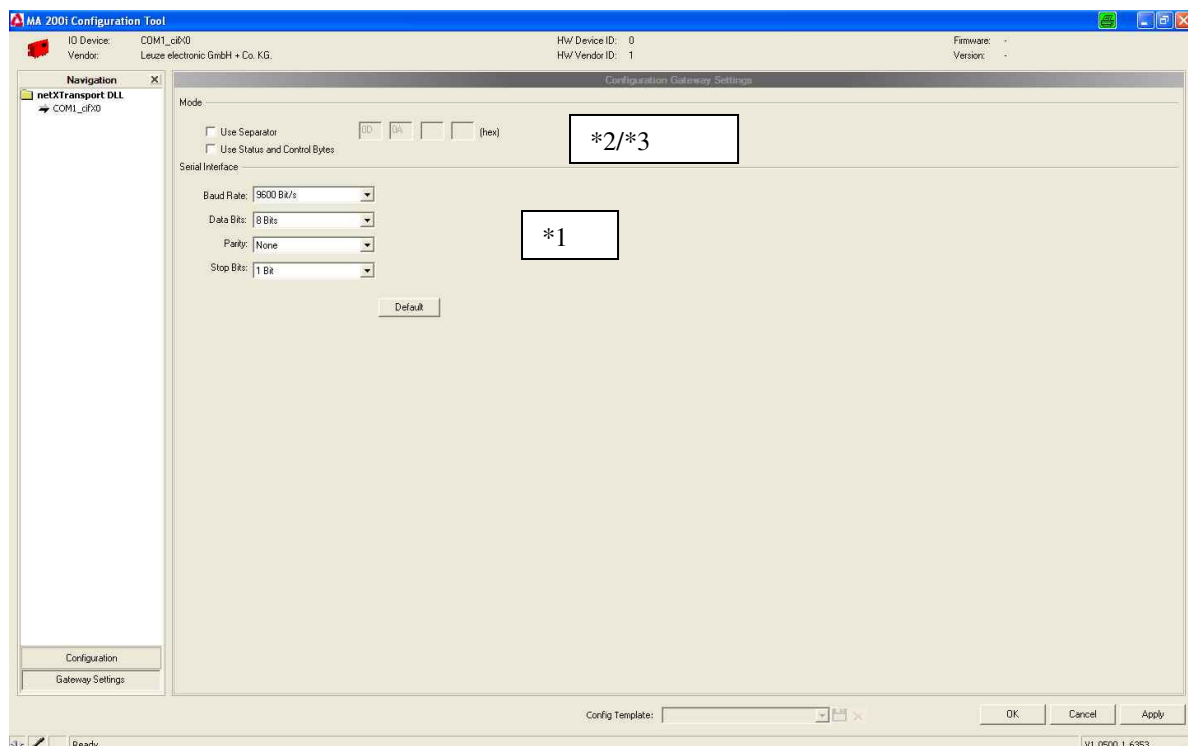
For the transfer of the parameters to the MA please click on the Button „Apply“(\*6).

Of course the parameter sets as a file can be stored on the PC/PLC –as soon you type in a file name (\*7).

## Parameter setting RS232

On the second page the RS232 set (\*1, depending on the connected device) and the use of the State/Controlbits (\*2) can be configured. A change of the values for the RS232 will overwrite the preset of the device selector switch!

For a proper function the setting must fit the settings of the connected device and should be set there, too. Please note not all the devices offer a settable RS232 interface



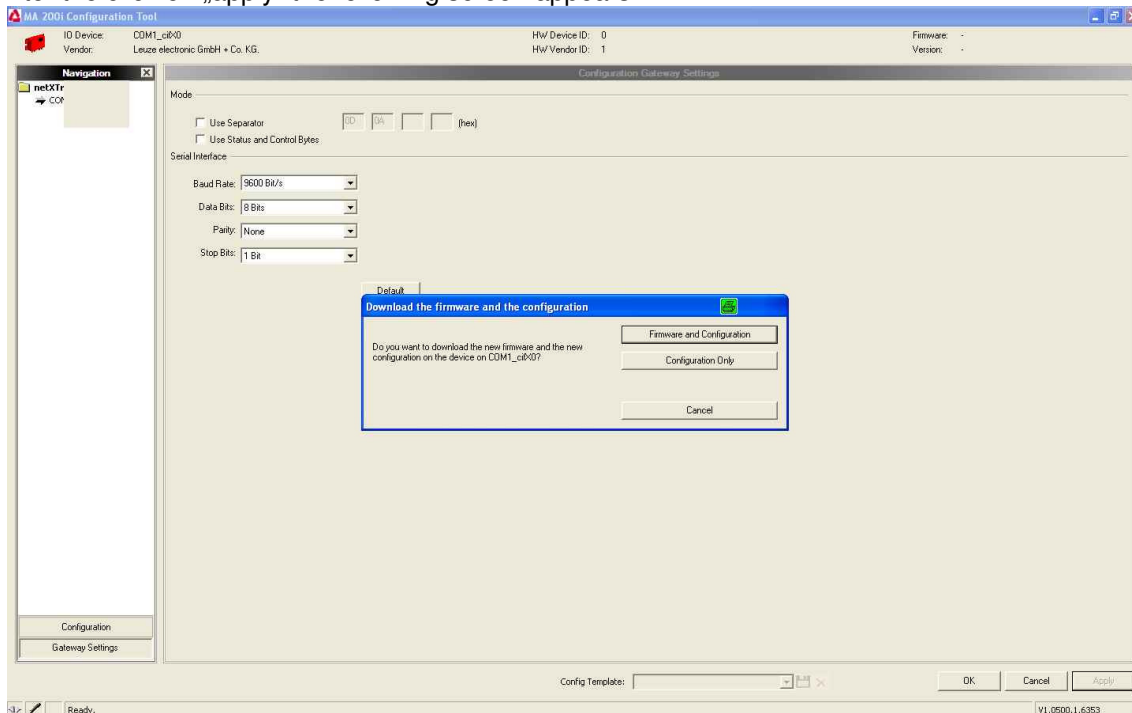


The telegram structure is depending on the position of the device selector switch on the PCB board of the MA. In addition telegram separator(s) can be set for the connected device (\*3).

To transmit the values to the MA208i please click on the button "Apply".

## Transfer changes to MA

After the click on „apply“ the following screen appears



Here you can decide either to transmit the configuration (strongly recommended!!) or even transmit the firmware (stored within the Configuration software) to the connected MA. Important Note: the software does NOT check anything about the firmware version!!

## Checking the connection

After the setting and applying of the IP-addresses the values of the MA208i can be checked via the RS232 and a terminal software, e.g. BCL config with the "V" command.

To do so power up the MA with service switch in position "RUN", move it to "MA" and send the V command via RS232 and the setting appears on the screen (like shown in MA description).

For a simple check of the connection from the PLC/PC first the MA has to be turned powerless, move the service switch to "RUN" Mode and powered up again. Now the check is possible with the standard TCP/IP services e.g. PING on the set address. For a typical setup these are all needed steps and the preparation is finished.

Several software tools to analyze TCP / IP connections in difficult situations are available on the market, like Hercules or wire shark, but not part of this description.



## Further information and contact

Leuze electronic takes no responsibility for defects etc. through incorrect use of the software.

If you want to have further information you can check the internet [www.leuze.de](http://www.leuze.de) or call us in the local offices or in the headquarters

Leuze electronic GmbH  
PO Box 1111  
D- 73277 Owen/ Teck (Germany)  
+49 7021- 573-0  
info@leuze.de