

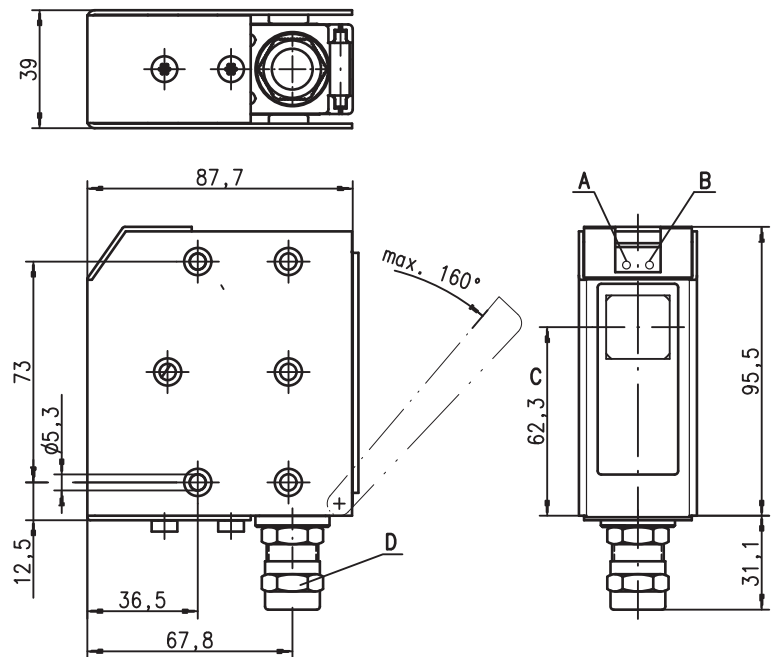
LS 96 Ex n

Throughbeam photoelectric sensor

en 02-2011/01 50111377



Dimensioned drawing



- A** Green indicator diode
- B** Yellow indicator diode
- C** Optical axis
- D** Screwed cable gland M16x1.5 for Ø 5 ... 9 mm

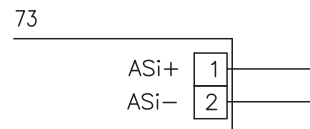


0 ... 39m



- Throughbeam photoelectric sensors with high performance reserve in red light
- Robust metal housing with shock-resistant optical window, protection class IP 67/ IP 69K for industrial application
- Receiver with integrated AS-interface slave technology
- Transmitter without integrated AS-interface slave technology; receives voltage supply via AS-interface line
- Wide angle version to simplify the alignment
- Ex II 3G Ex nA II T4
- Ex II 3D Ex tD A22 IP67 T70°C

Electrical connection



Accessories:

(available separately)

- Mounting systems (BT 96, BT 96.1, UMS 96, BT 450.1-96)
- Alignment aid ARH 96

AS-interface Accessories:

(available separately)

- Bus terminals
- AS-interface ribbon cable
- Address programming device
- Coupling modules, intermediate cables, etc.

We reserve the right to make changes • DS_LS96MA_1829W_7_Ex_n_en.fm

Specifications

Optical data

Typ. operating range limit ¹⁾	0 ... 39m
Operating range ²⁾	0 ... 30m
Light source	LED (modulated light)
Wavelength	660nm (red light)

Timing

Sensor switching frequency	500Hz
Sensor response time	1ms
Delay before start-up	≤ 200ms

Electrical data

Operating voltage U _B	26.5V ... 31.6V (according to AS-interface specifications)
Bias current receiver	≤ 35mA
Bias current transmitter	≤ 15mA

Indicators

Green LED	ready
Yellow LED	light path free
Yellow LED, flashing	light path free, no performance reserve

Mechanical data

Housing	diecast zinc
Optics cover	polycarbonate
Weight	380g
Connection type	terminals 5 ... 9mm
Screwed cable gland	EEx e II clamping torque 3.5Nm

Environmental data

Ambient temp. (operation/storage)	-20°C ... +50°C/-40°C ... +55°C
Protective circuit ³⁾	1, 2
VDE safety class ⁴⁾	II, all-insulated
Protection class	IP 67, IP 69K ⁵⁾
LED class	1 (acc. to EN 60825-1)
Standards applied	IEC 60947-5-2

AS-interface data for receiver

I/O code	1
ID code	1
Cycle time acc. to AS-interface specification	5ms
AS-interface standard according to profile	S-1.1

Explosion protection

Labelling (CENELEC)	Ⓔ II 3G Ex nA II T4	Ⓔ II 3D Ex tD A22 IP67 T70°C
---------------------	---------------------	------------------------------

- 1) Typ. operating range limit: max. attainable range without performance reserve
- 2) Operating range: recommended range with performance reserve
- 3) 1=transient protection, 2=polarity reversal protection
- 4) Rating voltage 250VAC
- 5) IP 69K test acc. to DIN 40050 part 9 simulated, high pressure cleaning conditions without the use of additives, acids and bases are not part of the test

Assignment: data bits				Assignment: parameter bits			
		Programming (host level)				Programming (host level)	
D ₀	Switching output	0 no reflection	System input	*P ₀	NC	0	System parameter
		1 reflection	System input			1	
D ₁	Warning output autoControl	0 active	System input	*P ₁	Light/dark switching	0 dark switching	System parameter
		1 not active	System input			1 light switching	System parameter
D ₂	Ready output	0 sensor not ready	System input	*P ₂	NC	0	System parameter
		1 sensor ready	System input			1	System parameter
*D ₃	NC	0		*P ₃	NC	0	System parameter
		1				1	System parameter

* default = 1

Order guide

	Designation	Part No.
Transmitter and receiver	LS 96 M/A-1829W-7 Ex n	
Transmitter	LSS 96 M-1809W-73 Ex n	50111380
Receiver	LSE 96 M/A-1829W-73 Ex n	50111379

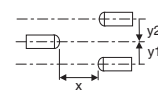
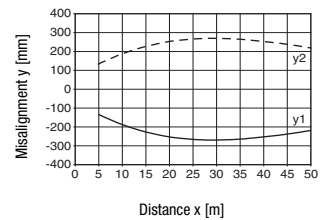
Tables

0	30	39
---	----	----

	Operating range [m]
	Typ. operating range limit [m]

Diagrams

Typ. response behaviour



Remarks

- **Approved purpose:**
This product may only be used by qualified personnel and must only be used for the approved purpose. This sensor is not a safety sensor and is not to be used for the protection of persons.
- The transmitter has no integrated AS-i slave technology.
- The low current consumption of the transmitter enables power supply via AS-interface line.
- Transmitter and receiver behave like a slave in an AS-interface branch.

LS 96M/A-182W-7 Ex n

Angle at 3m distance:

Transmitter:

Angle of radiation typ.: 10°

Receiver:

Receiving angle typ.: 12°

Operating instructions for sensors for use in potentially explosive areas of Group II, Category 3, Zones 2 ("Gas Ex") and 22 ("Dust Ex")

The sensors produced by Leuze electronic GmbH + Co. KG for use in potentially explosive areas are sensors which function on the optical electronic principle. Without making physical contact, these sensors detect objects which are located in or which pass through the light beam.



Attention!

Electrical equipment may endanger humans and (where applicable) animal health, and may threaten the safety of goods if used incorrectly and under unfavourable conditions in potentially explosive areas.

A safe operation in potentially explosive areas is only possible if the equipment is used properly and for its intended purpose.

This requires that the installation and operating instructions are adhered to and that appropriate measures are taken to ensure that this is effectively and permanently ensured.



Notes!

- In order to achieve a safe operation of sensors of Group II, Category 3, in potentially explosive areas, installation and protective devices appropriate to the application must ensure that operational events do not damage or overload the equipment.

Installation, Commissioning

In order to comply with the requirements acc. to EN 61 241-1 and EN 60 079-15, the following prerequisites must be met:

- Devices with connector (e.g. Series 46B) must be equipped with an additional safeguard or a mechanical interlocking guard K-VM12-Ex (Part No. 50109217) to avoid unintended separation of the connectors. The warning sign "Do not disconnect under voltage" that is supplied with the device must be attached to the sensor or its mounting bracket so that it is clearly visible.
- Devices with terminal compartment lid (e.g. Series 96) must only be commissioned if the terminal compartment lid of the device is properly sealed.
- Connection cables and connectors must be protected from excessive or unintended pulling or pushing strain.
- The requirements according to EN 61 241-1 regarding dust deposits and temperatures must be observed.



Attention!

- Due to the physical circumstances, the sensors must not be used for the protection of persons or for purposes of emergency shutdown.
- The sensors must only be installed and maintained by trained electricians.
- The applicable regulations for the installation of electrical equipment in potentially explosive areas must be observed.

Maintenance

No changes may be made to the sensors for potentially explosive areas.

Repairs to the sensors may only be performed by persons trained for such work or by the manufacturer. Defective devices must be replaced immediately.

Cyclical maintenance of the sensors is not necessary.

Depending on the environmental conditions, it may occasionally be necessary to clean the optical surface of the sensors. This cleaning must only be performed by appropriately trained persons. We recommend using a soft, damp cloth for this purpose. Cleaning agents that contain solvents must not be used!

Chemical resistance

The sensors demonstrate good resistance against many diluted acids and bases.

Exposure to organic solvents is possible only under certain circumstances and only for short periods of time.

Resistance to chemicals should be examined on a case by case basis.



the **sensor** people

EG-Konformitätserklärung
-EC Declaration of Conformity
-Déclaration CE de conformité
-Declaración de conformidad CE

Name des Herstellers:
-Name of the manufacturer: **Leuze electronic GmbH+Co. KG**
-Le constructeur:
-Nombre del fabricante:

Anschrift:
-Address: **In der Braike 1 D-73277 Owen/ Teck**
-domicile:
-Dirección:

Erklärt unter alleiniger Verantwortung, dass das Produkt mit der Bezeichnung:
-declares under sole responsibility that the products with the designation:
-assurant sa pleine et entière responsabilité déclare que les produits avec la Référence:
-declara bajo su propia responsabilidad, que los productos con el Número de pedido:

LSS 96M-1079-23 Ex n	50111015
LSE 96M/P-3019-21 Ex n	50111016
LSS 96M-1809W-73 Ex n	50111380
LSE 96M/A-1829W-73 Ex n	50111379
SLSS 96M-1089-T2-24 Ex n	50111085
SLSE 96M/P-1079-T2-21 Ex n	50111086

Kennzeichnung Gas:
-Marking for gas:
-Certification gaz:
-Certificación gas:

Kennzeichnung Staub:
-Marking for dust:
-Certification poussière:
-Certificación polvo:

II 3G Ex nA II T4

II 3D Ex tD A22 IP67 T70°C

Folgenden Richtlinien und Normen für die Gerätegruppe II, Gerätekategorie 3 entsprechen und bei bestimmungsgemäßer Verwendung und Beachtung der Betriebsanleitung die grundlegenden Sicherheits- und Gesundheitsanforderungen erfüllen.
-conform to the following directives and standards for equipment group II, equipment category 3. They fulfill the basic health and safety requirements if used as intended and in accordance with the operating manual.
-sont conformes aux directives et normes ci-dessous pour les appareils du groupe II, catégorie 3 et que sous réserve d'utilisation conforme et du respect des consignes du manuel d'utilisation ceux-ci répondent aux exigences fondamentales pour la sécurité et la santé.
-corresponden a las directivas y normas para grupo de aparatos II categoría de aparatos 3 y que cumplen los requerimientos de seguridad y de salud al ser empleados debidamente teniendo en cuenta las instrucciones de uso.

Richtlinie 94/9/EG / Richtlinie 89/336/EWG	EN 60947-5-2:1998+A1:1999+A2:2004
<i>-Directive 94/9/EC / Directive 89/336/EEC</i>	EN 60825-1:1994+A1:2002+A2:2001
<i>-Directive 94/9/CE / Directive 89/336/CEE</i>	EN 60079-15:2005
<i>-Directiva 94/9/CE / Directiva 89/336/CEE</i>	EN 61241-1:2004

Owen, den 11. Februar 2009

Dr. Harald Grübel (Geschäftsführer/ General Manager/ Directeur / Gerente)

Leuze electronic GmbH + Co. KG
 In der Braike 1
 D-73277 Owen
 Telefon +49 (0) 7021 573-0
 Telefax +49 (0) 7021 573-199
 info@leuze.de
 www.leuze.com

Leuze electronic GmbH + Co. KG, Sitz Owen, Postfachgericht Stuttgart, HRB 230117
 Persönlich haftendes Geschäftsführer/ Leuze electronic Geschäftsführungs-GmbH
 Sitz Owen, Postfachgericht Stuttgart, HRB 230660
 Geschäftsführer Dr. Harald Grübel (Vorstandsrat), Kirsten Just
 USt-IdNr. DE 143612521 | Lizenznummer 2554003
 Es gelten ausschließlich unsere aktuellen Verkaufs- und Lieferbedingungen.
 Only our current terms and conditions of sale and delivery shall apply.