



ILS 92

Throughbeam photoelectric sensors



26m



- Warning output autoControl for increased availability
- Activation input for testing and interlinking
- Compact construction with robust diecast zinc housing and glass optics for protection against environmental influences
- Light or dark switching by reversing the polarity of the operating voltage
- Electrical connection with 6-pin standard plug

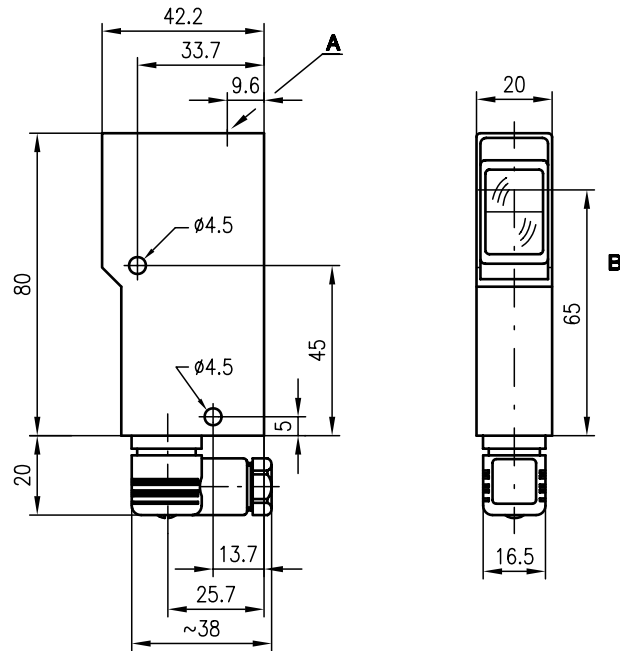


Accessories:

(available separately)

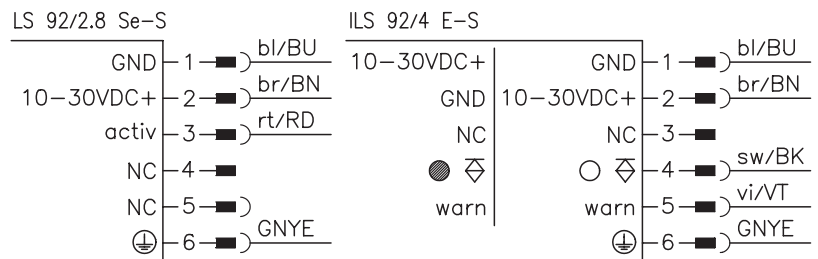
- Mounting systems (BT 92, UMS 1)
- Ready-made cables (KB ...)

Dimensioned drawing



- A Indicator diode
- B Optical axis

Electrical connection



We reserve the right to make changes • 92_a01e.fm

Specifications

Optical data

Typ. operating range limit ¹⁾	0 ... 26m
Operating range ²⁾	0 ... 18m
Light source	LED (modulated light)
Wavelength	880nm

Timing

Switching frequency	200Hz
Response time	2.5 ms
Delay before start-up	≤ 100ms

Electrical data

Operating voltage U_B	10 ... 30VDC (incl. residual ripple)
Residual ripple	≤ 15% of U_B
Bias current	≤ 35mA
Switching output	PNP transistor output
Function characteristics	light or dark switching (by reversing the polarity of U_B)
Signal voltage high/low	≥ ($U_B - 2V$)/≤ 2V
Output current	max. 100mA

Indicators

Receiver	—
LED yellow	light path free
LED yellow flashing	light path free, no performance reserve
Transmitter	—
LED yellow	transmitter ON

Mechanical data

Housing	diecast zinc
Optics	glass
Weight	140g
Connection type	standard plug 6-pin

Environmental data

Ambient temp. (operation/storage)	-20°C ... +60°C/-30°C ... +70°C
VDE safety class	I for S types
Protective circuit ³⁾	2, 3
Protection class	IP 65 for all S types IP 67 (with M12 types, optional)
LED class	1 (acc. to EN 60825-1)
Standards applied	IEC 60947-5-2

Options

Activation input activ	—
Transmitter active/not active	≥ 8V/≤ 2V or not connected
Activation/disable delay	≤ 1ms
Input resistance	4.7KΩ ± 10%
Warning output autoControl warn	PNP transistor, counting principle
Signal voltage high/low	≥ ($U_B - 2V$)/≤ 2V
Output current	max. 100mA

1) Typ. operating range limit: max. attainable range without performance reserve

2) Operating range: recommended range with performance reserve

3) 2=polarity reversal protection, 3=short-circuit protection for all outputs

Order guide

	Designation	Part No.
with 6-pin standard plug	ILS 92/4.8 S	
Transmitter	LS 92/2.8 Se-S	500 11218
Receiver with warning output	ILS 92/4 E-S	500 18061

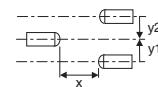
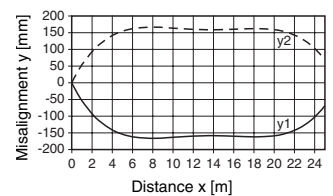
Tables

0	18	26
---	----	----

<input type="checkbox"/>	Operating range [m]
<input type="checkbox"/>	Typ. operating range limit [m]

Diagrams

Typ. response behaviour



Remarks