

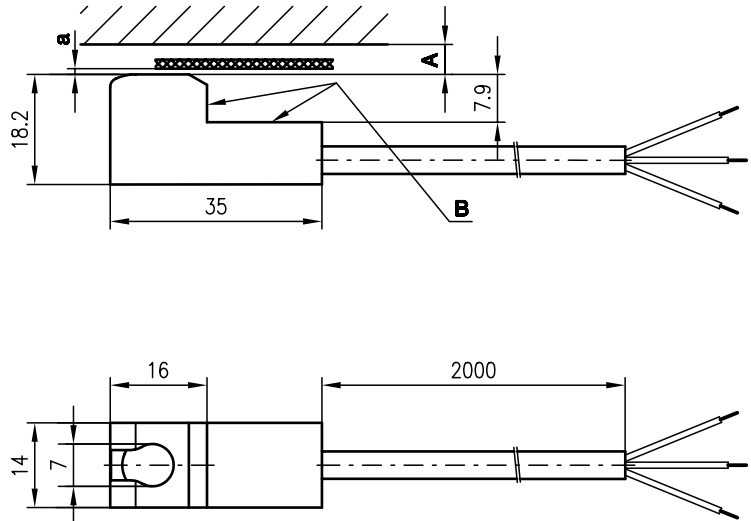


RT 707

Energetic diffuse reflection light scanners



Dimensioned drawing



A Free space
B Plain

Distance a:
optimum scanning distance 1.4mm
scanning range 0 ... 3.5mm with white paper (90%)
scanning range 0.1 ... 1.6mm with black paper (6%)

Free space A:
no reflection from 4.5mm (background suppression)

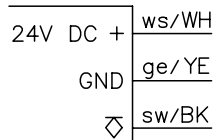


0 ... 3.5mm



- Miniature construction with completely integrated electronics for 24V technology
- The PNP transistor output is short-circuit proof and polarity reversal protected
- Immersed optical cover for mechanical protection
- Pollution resistant through specially designed optics

Electrical connection



Accessories:

We reserve the right to make changes • MS_c06e.fm



Specifications

Optical data

Scanning range (white 90%)	0 ... 3.5mm
Light source	LED (modulated light)
Wavelength	880nm

Timing

Switching frequency	3000Hz
Response time	0.16ms
Delay before start-up	≤ 100ms

Electrical data

Operating voltage U_B	21.5V ... 25VDC
Residual ripple	≤ 10% of U_B
Bias current	≤ 30mA
Switching output	PNP transistor output
Function characteristics	light switching
Signal voltage high/low	≥ ($U_B - 2V$) / ≤ 2V
Output current	50mA

Mechanical data

Housing	aluminium anodised, black
Optics cover	glass
Weight	approx. 15g
Cable length	2000mm
Cable cross-section	3x0.25mm ²

Environmental data

Ambient temp. (operation/storage)	0°C ... +50°C / -30°C ... +60°C
Protective circuit ¹⁾	2, 3
VDE safety class	III
Protection class	IP 65
Standards applied	IEC 60947-5-2

1) 2=polarity reversal protection, 3=short-circuit protection for all outputs

Tables

Typical applications:

Paper edge detection in printing machines

Diagrams

Order guide

Designation	Part No.
RT 707/4-2	500 35072

Remarks

- The upper and lower scanning range limit varies depending on the reflection properties of the material surface.